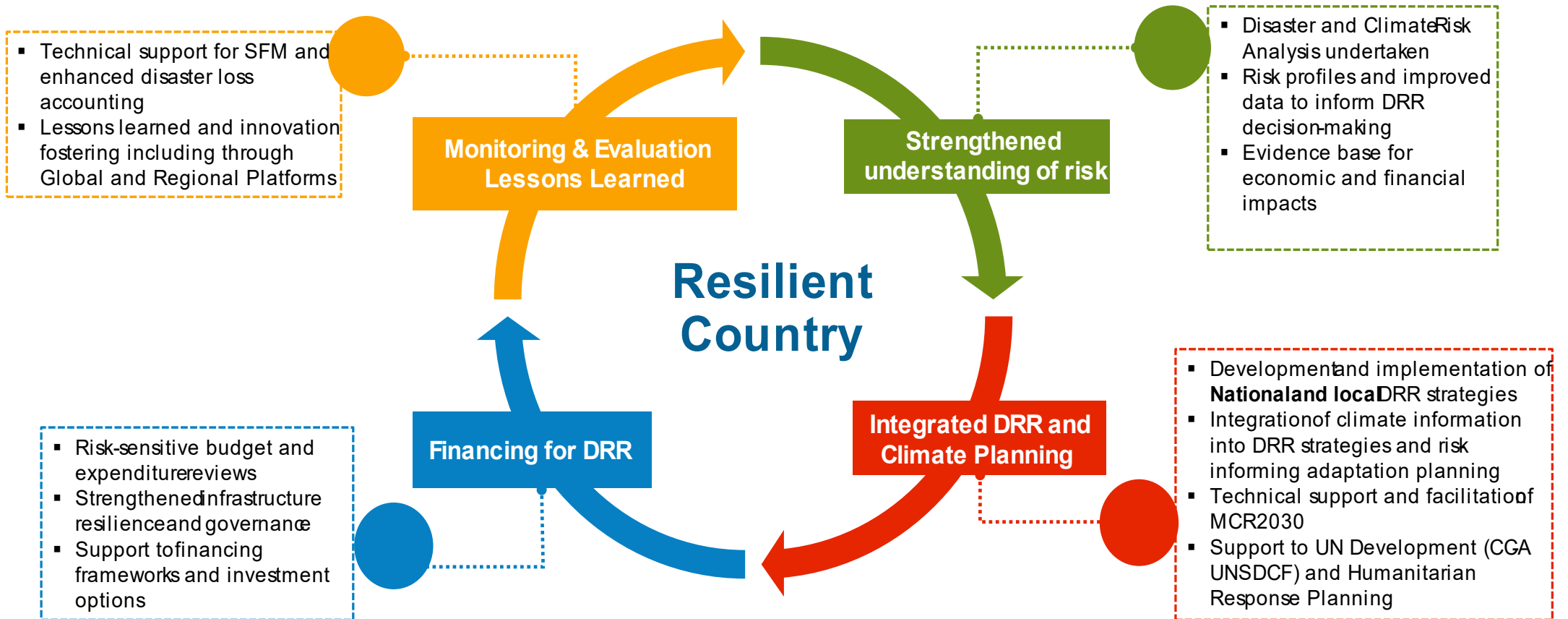


Risk Information Exchange & Classifying Hazards

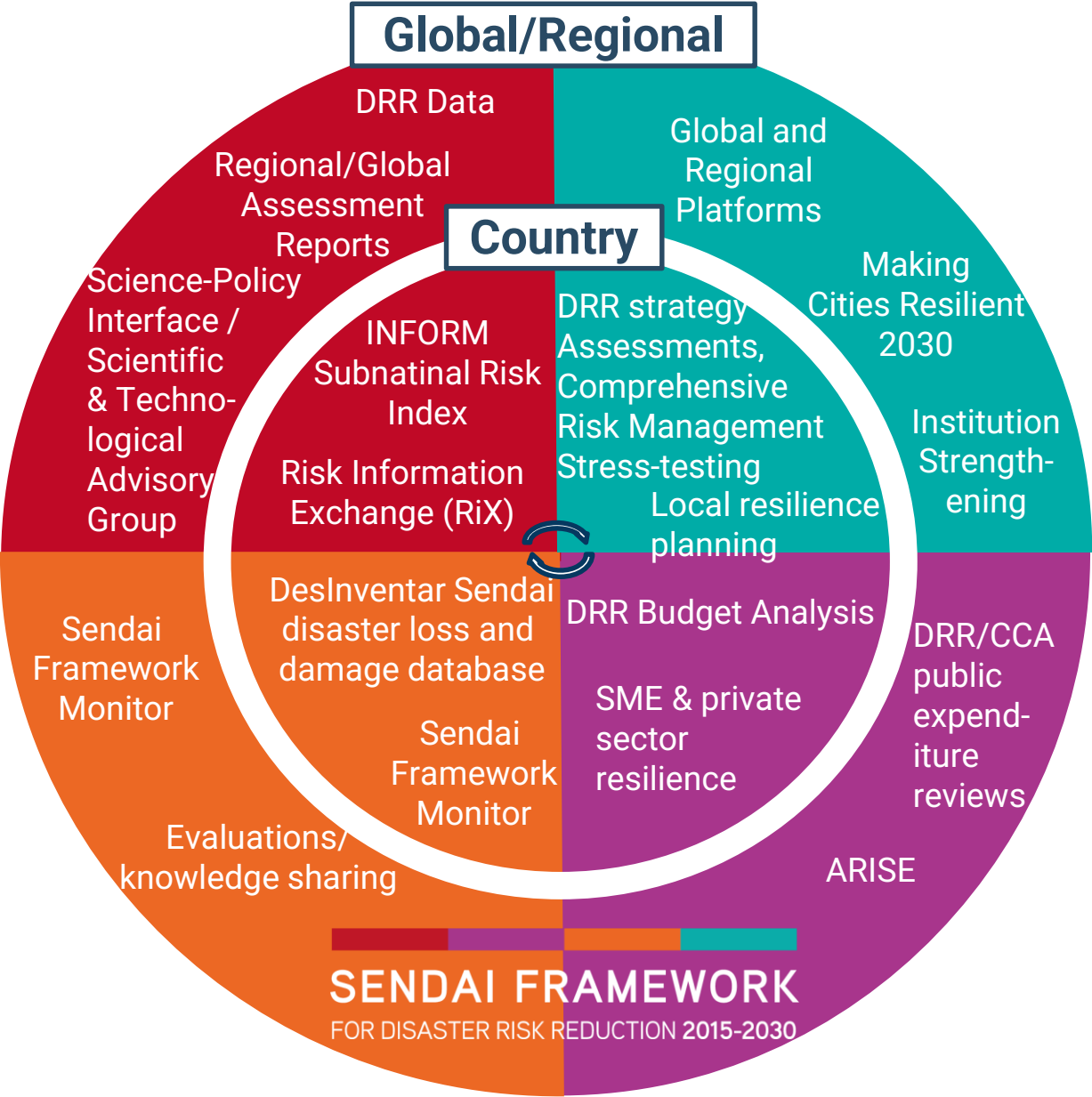
EM-DAT STAG - 20-21 March 2023

Adam Fysh - UNDRR

Turning the Sendai Framework into action at country level



Country Support Approach



Disaster Risk Knowledge

INFORM

Countries equipped with INFORM subnational risk indexes to support decision-making on prevention, preparedness and disaster response.



Countries reporting progress on the online Sendai Framework Monitor

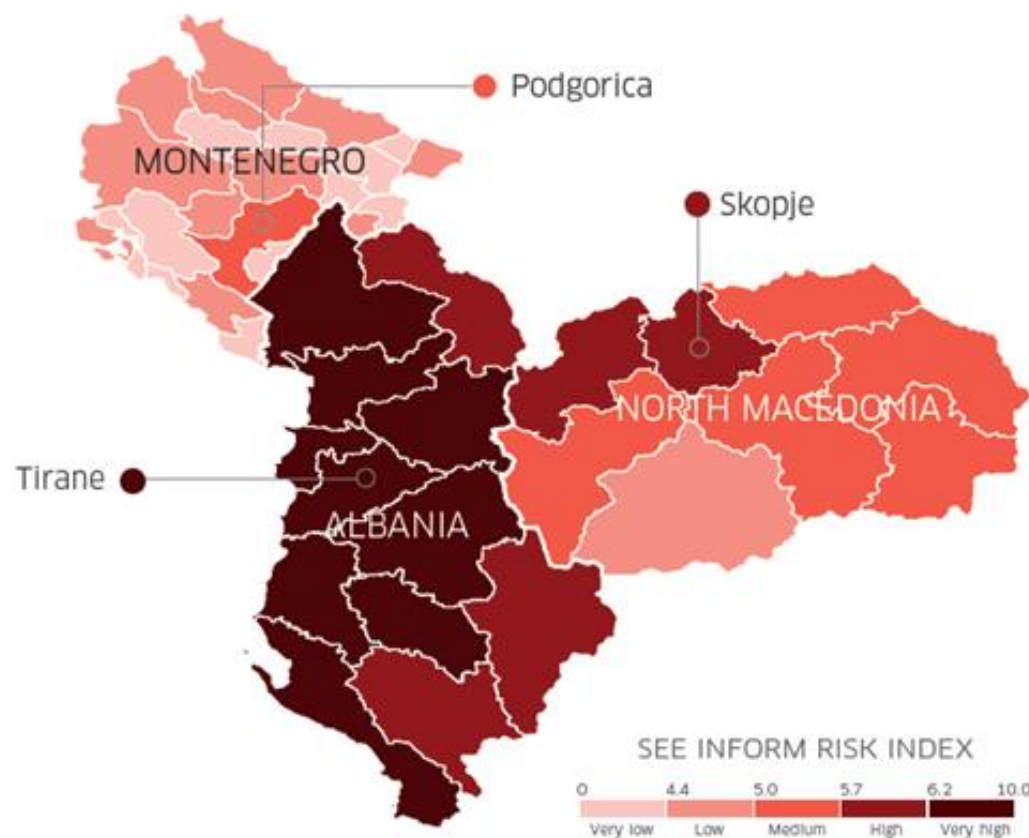


Countries supported to use the DesInventar Sendai database

Risk Information Exchange

Roll-out of new Risk Information Exchange in Europe and Central Asia will begin in **2023**.

© UNDRR – United Nations Office for Disaster Risk Reduction



What is RiX?

- An aggregator of data sources on hazards (including climate-related), exposure, vulnerability, loss and damage, and other impacts from reliable generators of risk information
- A repository of open-source global, regional & national risk information

- Facilitates access to available risk information
- Visualization and database tool to accelerate risk-informed planning
- Organizes information by a standard set of hazard definitions
- Identifies risk knowledge gaps to inform efforts to fill them (e.g., old flood maps)

RiX is not:

- Replacing or hosting other tools or platforms
- A real-time disaster incident monitoring tool

Risk information to inform decisions

DATA

Strengthening access, analysis, and visualization of risk data.

ANALYSIS

Catalyzing new knowledge for risk-informed development and humanitarian action

CAPACITY

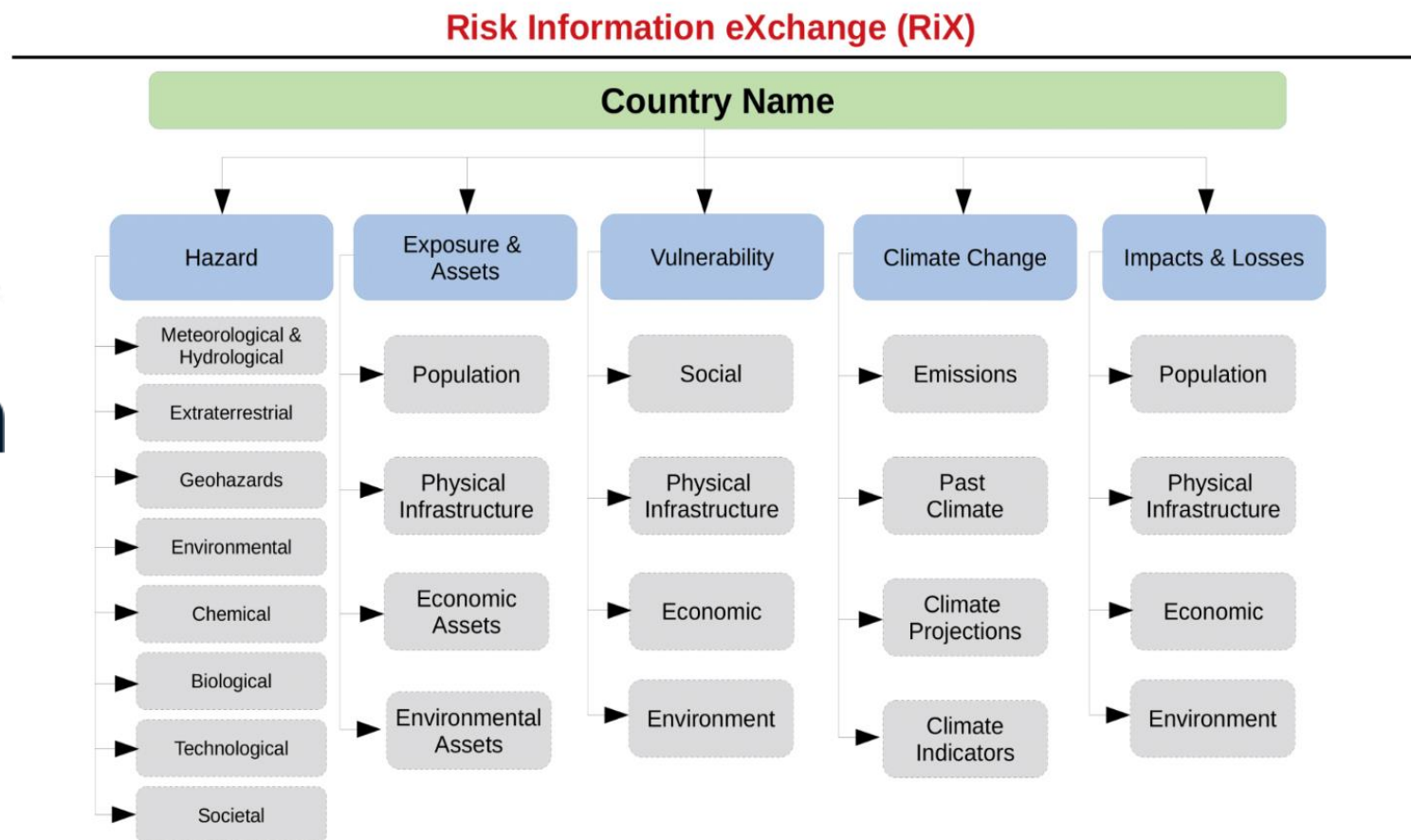
Technical Support and Tools

NETWORK

Influencing agenda setters and financing systems

RiX Data Structure

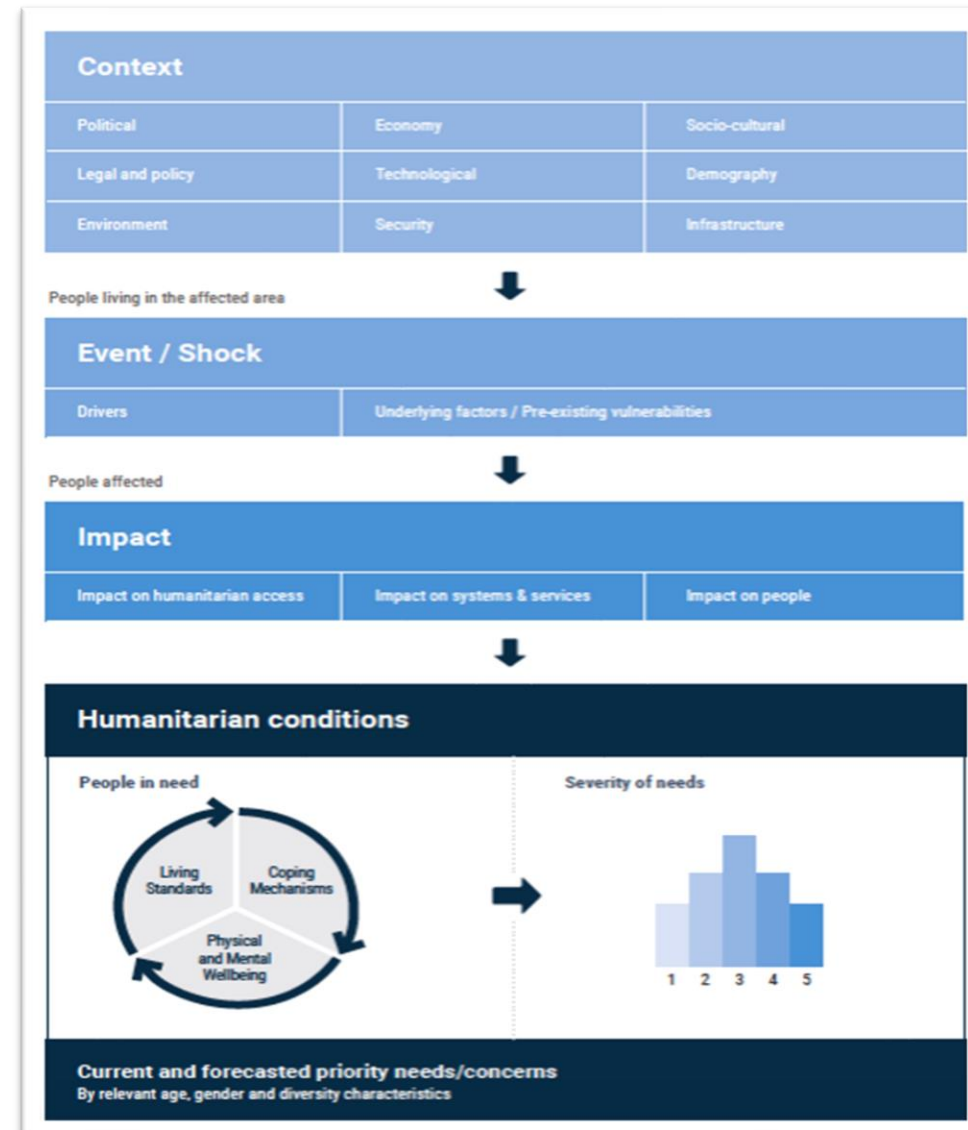
Risk Information Exchange



METADATA AVAILABLE IN RiX

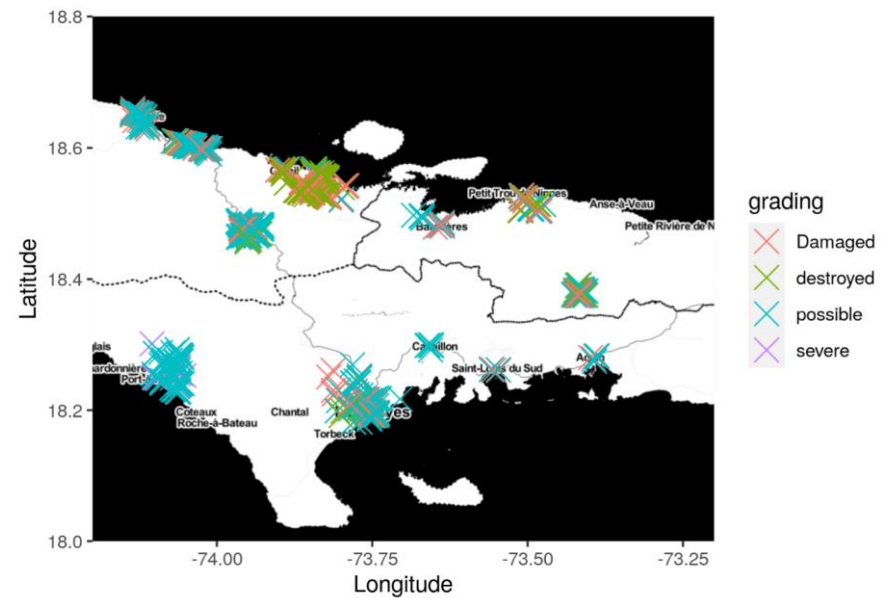
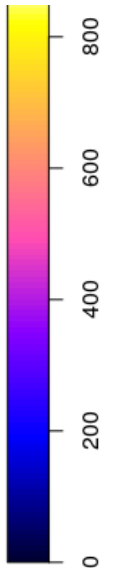
- Organization type (Gov, UN, NGOs, researchers, private sector)
- Spatial & temporal resolution
- Broad sectoral coverage
- 13 SDG risk areas linked to national UN Sustainable Development Frameworks
- Joint Inter-sectoral Analysis Framework) CCA
- Data type & format (e.g., SHP, CSV, TIFF)

SDG Risk Areas



© 2013 Pearson Education, Inc. or its affiliate(s). All rights reserved.

- Spatial data
 - Gridded
 - Admin Levels
 - Other
- Temporal data
 - Regular
 - Sparse



Risk Information Exchange (RiX): Design

Searchable by:

- Region, country, sub-national, local
- 302 standardized hazard definitions based on International Science Council/UNDRR Hazard Classification
- exposure & vulnerability
- Climate change projections & variables
 - Thematic sections of UN Common Country Assessment template
 - JIAF (Joint Inter-sectoral Analysis Framework) categories underpinning Humanitarian Needs Overview
 - 13-SDG based risk areas

Features:

- Curated map viewing on hazards, vulnerability and exposure
- Meta-data about risk information
- Admin 1, 2, and 3 levels (where risk data exists)

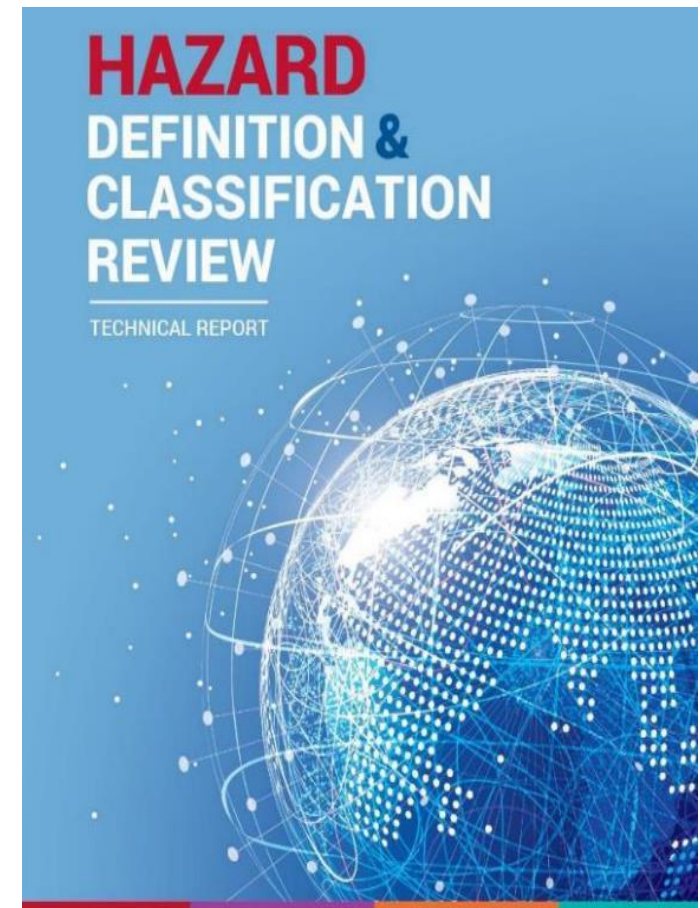
Future features (2023):

- Loss and damage and impact datasets imported from IDMC-GIDD, EM-DAT, DesInventar, GDACS, and Global Crisis Databank with IFRC and partners
- Use-case story boards
- Upload function to accelerate national data acquisition
- Comparison of global risk datasets across countries

Harmonization and Common Terminologies

RiX supports national implementation of the Sendai Framework, the SDGs, and Paris Agreement by **providing a common set of hazard definitions**, leveraging the data revolution, rigorous accountability mechanisms and renewed global partnerships.

- Meteorological and hydrological
- Extraterrestrial
- Geohazards
- Environmental
- Chemical
- Biological
- Technological
- Societal



Thank you!

<http://rix.undrr.org>

rix@un.org