



Carl Vinson **Institute of Government**

The University of Georgia

ITOS Services for Humanitarian Mapping

Karen Payne, PhD



ITOS Services for Humanitarian Mapping | Munich, Germany | February, 2010 | Centre for Research Epidemiology of Disasters

ITOS & the GIST Repository

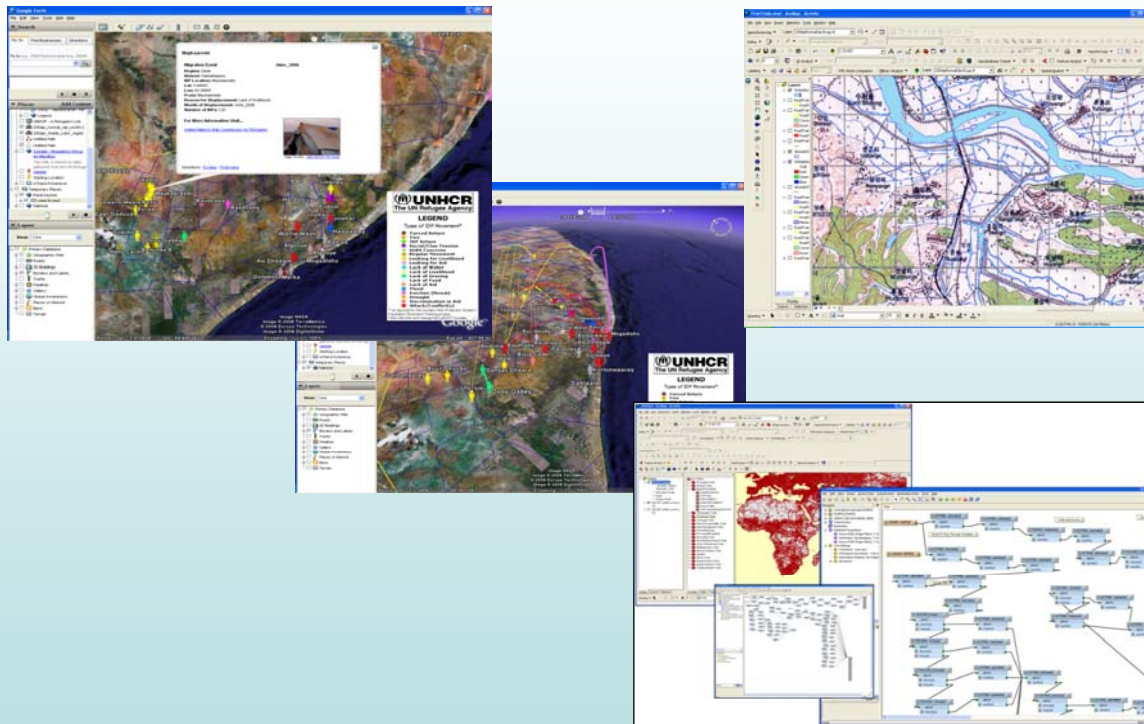
Service Type	Server URL	Service Name	Username	Password
ArcIMS Feature Service	https://mapsdev-gist.itos.uga.edu	GlobalMapFeature	unuser	itos2001
ArcMap Services	http://mapsdev-gist.itos.uga.edu/arcgis/services	GlobalMapFeature	unuser	itos2001
Rest Catalog of All Other Services (Web, OGC, GEI)	http://mapsdev-gist.itos.uga.edu/arcgis/rest/services	See List	N/A	N/A

The nomenclature regarding live data services can be confusing. In essence, different services are intended to provide different levels of functionality and access to data, either through proprietary or open-source protocols. At one end of the spectrum, a service may allow you to display a predefined view of a raster or vector dataset or piece of

<https://gist.itos.uga.edu>

ITOS Services for Humanitarian Mapping | Munich, Germany | February, 2010 | Centre for Research Epidemiology of Disasters

Custom IT Services



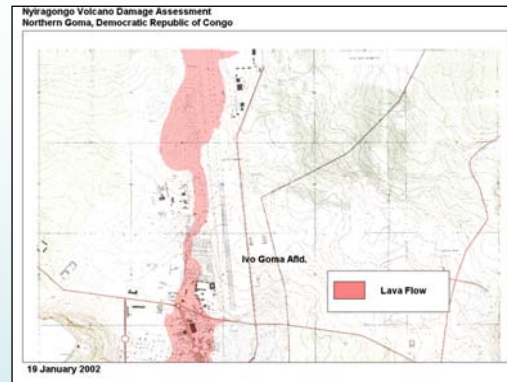
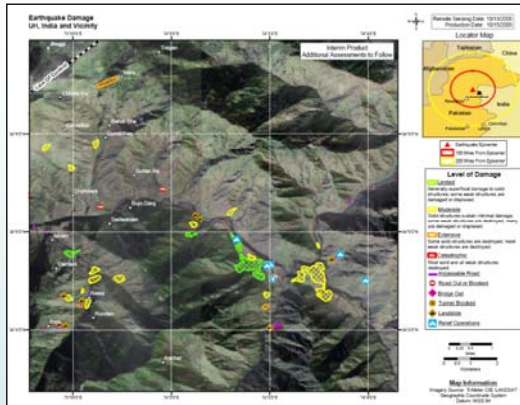
ITOS Services for Humanitarian Mapping | Munich, Germany | February, 2010 | Centre for Research Epidemiology of Disasters

Spatially Refining EM-DAT

- Find polygons/footprints for disaster areas
- Find point location information from descriptive strings
 - use to identify admin boundaries

ITOS Services for Humanitarian Mapping | Munich, Germany | February, 2010 | Centre for Research Epidemiology of Disasters

Existing Footprint Data



Content Title: Kashmir Landslide Points 16 October 2005
Data Format: ESRI Shapefile
Coordinate System: GCS_WGS_1984
File Size: 17kB

Data
Data



Content Title: Mozambique 2001 Flood Survey
Data Format: ESRI Shapefile
Coordinate System: GCS_WGS_1984
File Size: 39kB

Data Originator: Unknown
Data Provider: USAID/OFDA
Data Distributor: Geographic Information Support Team

ITOS Services for Humanitarian Mapping | Munich, Germany | February, 2010 | Centre for Research Epidemiology of Disasters

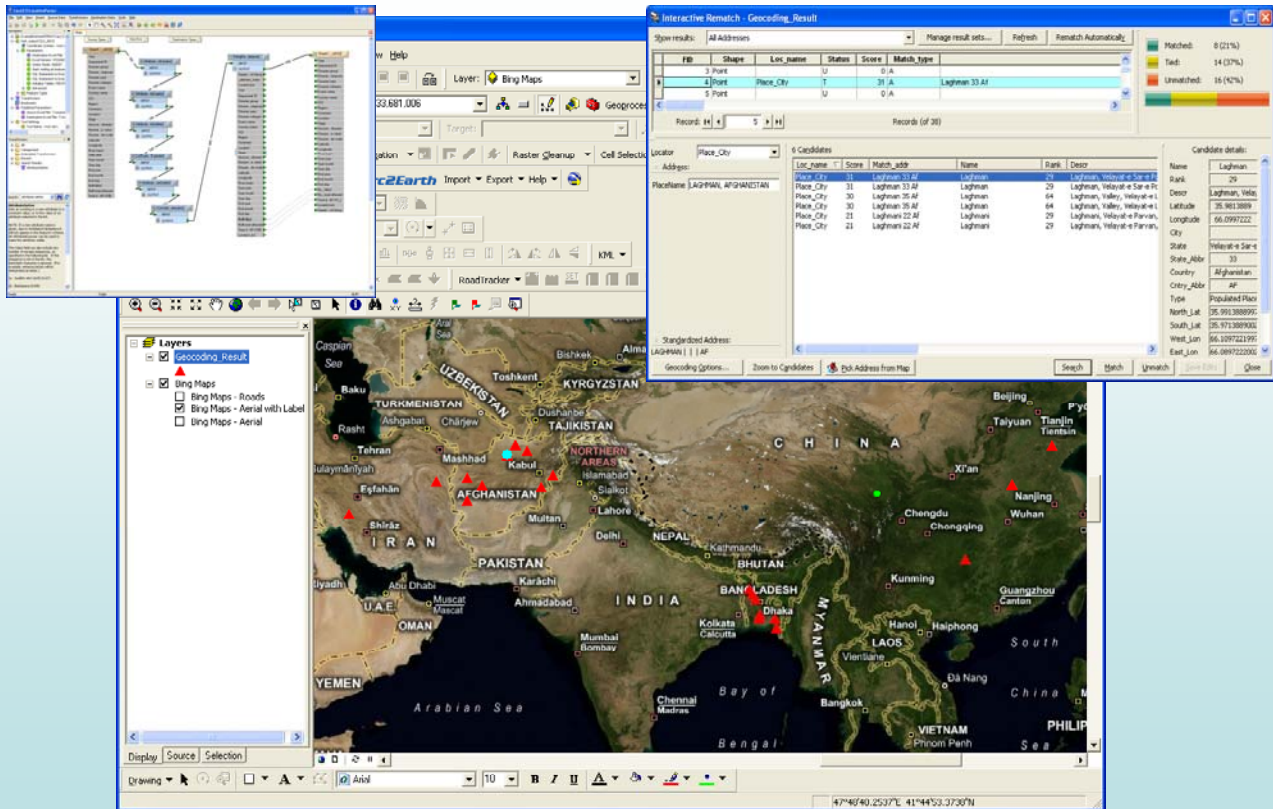
Locations with Unique Disaster ID

	Q	R	S	T	U	V	W	X	Y	Z	AA	AB	AC	AD	AE	AF
Location	Latitude	Longitude	River basin	Start year	Start month	Start day	End year	End month	End day	No. killed	No. total	€ Total damage	Location	Gazetteer	SearchString	
				2008	10	0	2008	10	0	0	280000	0	Kunduz	Kunduz, Afghanistan		
				2008	10	0	2008	10	0	0	280000	0	Balkh	Balkh, Afghanistan		
				2008	10	0	2008	10	0	0	280000	0	Faryab	Faryab, Afghanistan		
				2008	10	0	2008	10	0	0	280000	0	Badghis	Badghis provinces, Afghanistan		
an, Faryab (North), Nimruz (West)				2008	10	6	2008	0	0	17	1100	0	Laghman	Laghman, Afghanistan		
an, Faryab (North), Nimruz (West)				2008	10	6	2008	0	0	17	1100	0	Nooristan	Nooristan, Afghanistan		
an, Faryab (North), Nimruz (West)				2008	10	6	2008	0	0	17	1100	0	Nangarhar	Nangarhar (East), Afghanistan		
an, Faryab (North), Nimruz (West)				2008	10	6	2008	0	0	17	1100	0	Samangan	Samangan, Afghanistan		
an, Faryab (North), Nimruz (West)				2008	10	6	2008	0	0	17	1100	0	Faryab (N	Faryab (North), Afghanistan		
an, Faryab (North), Nimruz (West)				2008	10	6	2008	0	0	17	1100	0	Nimruz (W	Nimruz (West), Afghanistan		
				2008	8	0	2008	8	0	0	1180	0	Jalalabad	Jalalabad province, Afghanistan		
				2008	1	5	2008	2	15	1317	170684	0	Nangarhar	Nangarhar, Afghanistan		
				2008	1	5	2008	2	15	1317	170684	0	Laghman	Laghman (Eastern), Afghanistan		
				2008	1	5	2008	2	15	1317	170684	0	Paktika	Paktika, Afghanistan		
				2008	1	5	2008	2	15	1317	170684	0	Paktya (C	Paktya (Central), Afghanistan		
				2008	1	5	2008	2	15	1317	170684	0	Ghor	Ghor, Afghanistan		
				2008	1	5	2008	2	15	1317	170684	0	Ghorian	Ghorian, Afghanistan		
				2008	1	5	2008	2	15	1317	170684	0	Badghis	Badghis, Afghanistan		
				2008	1	5	2008	2	15	1317	170684	0	Herat (We	Herat (Western), Afghanistan		
				2008	1	5	2008	2	15	1317	170684	0	Sure Pul	Sure Pul, Afghanistan		
				2008	1	5	2008	2	15	1317	170684	0	Kunduz	Kunduz, Afghanistan		
				2008	1	5	2008	2	15	1317	170684	0	Balkh	Balkh, Afghanistan		

- EM-DAT sample
- Location information as descriptive strings

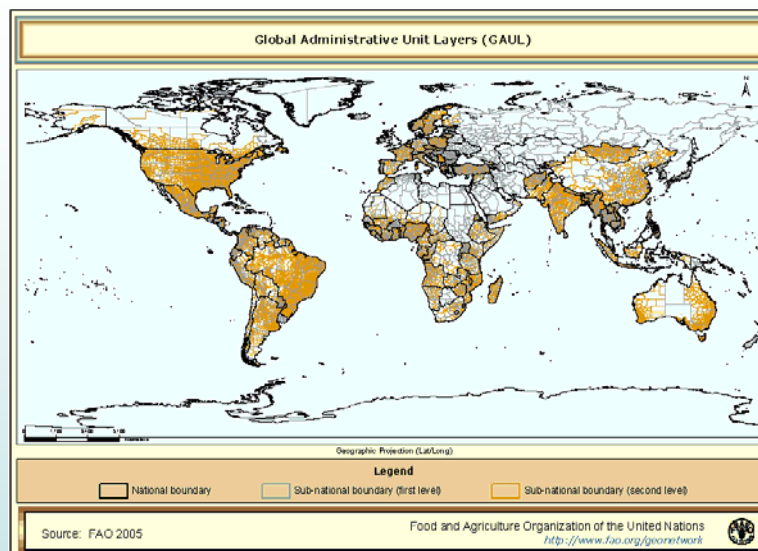
ITOS Services for Humanitarian Mapping | Munich, Germany | February, 2010 | Centre for Research Epidemiology of Disasters

Parse Strings, Submit to GAZ Service



ITOS Services for Humanitarian Mapping | Munich, Germany | February, 2010 | Centre for Research Epidemiology of Disasters

Point Locations to Choose Admin Bnd



- Overall: GAUL better choice (amount of data)
 - Think about long term structure
 - Pick up handful of BND data from GM

ITOS Services for Humanitarian Mapping | Munich, Germany | February, 2010 | Centre for Research Epidemiology of Disasters

Structure Summary: Attribution

	Scale	Admin Codes	Source	Attribution	Separate Feature Classes	Multi-part Polys	UNCS BND compliant	Coastline update	Change Layers
ITOS Global Map	✗	When available	When available	Point	✓ (0-5, All)	✓ ✗	✗	✗	✗
GAUL	✗	When available	Possibly housed elsewhere	Poly	✗ (0-2)	✗	✓	✓	✓

ITOS Services for Humanitarian Mapping | Munich, Germany | February, 2010 | Centre for Research Epidemiology of Disasters

Structure Summary: Data

<i>Level</i>	<u>0</u>	<u>1</u>	<u>2</u>	<u>3</u>	<u>4</u>	<u>5</u>
ITOS Global Map	255	253	149	22	5	1
GAUL	275	275	240	12	3	1

ITOS Services for Humanitarian Mapping | Munich, Germany | February, 2010 | Centre for Research Epidemiology of Disasters

Open Questions

- What are some of the end uses of the data?
 - Goal to integrate with CE-DAT and other datasets?
 - Data should be maintainable?
- Here Comes Everybody
 - Crowd sourcing Protocols
 - Crowd sourcing Processing

ITOS Services for Humanitarian Mapping | Munich, Germany | February, 2010 | Centre for Research Epidemiology of Disasters

Acknowledgments

They pay my bills and keep
me (kind of) satisfied:



And most importantly, our hosts:



Questions or comments? Please contact :

kpayne@itos.uga.edu

ITOS Services for Humanitarian Mapping | Munich, Germany | February, 2010 | Centre for Research Epidemiology of Disasters

Information Technology Outreach Services (ITOS)

- Service Department
 - Perhaps a quick snippet about why it rocks... or not.
- Training and Technical Solutions
 - Perhaps a quick snippet about why it rocks... or not.
- Geographic Information
 - Data (all kinds?)
 - Services (e.g. ??)
 - Application development (e.g.???)